



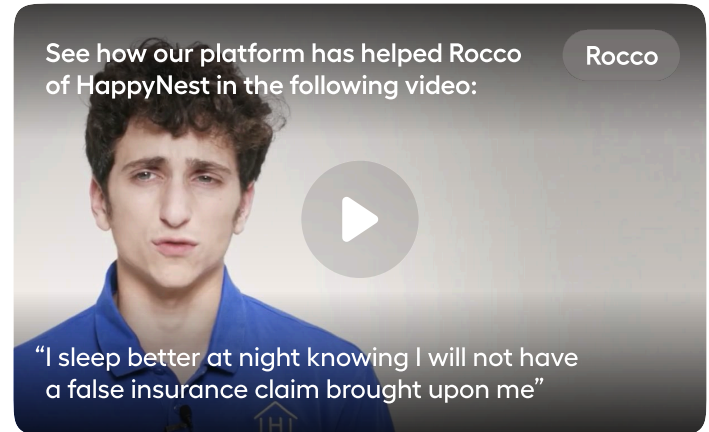
# Unlocking a fleet's full potential to earn monthly premium discounts, protect drivers, and turn a small investment into big monthly dividends

Implementing dashcams in fleets enhances safety, accountability, and efficiency.

- Video evidence in the event of accidents
- Assess driver behavior and implement corrective measures
- Identify inefficiencies and optimize vehicle use

Boost safety and cut costs with the simple and user-friendly Nexar Fleet solution.

- Easy DIY installation
- Expandable platform as your business grows
- Keep an eye on every trip, share what matters, and review it all with ease
- GPS tracking and geofencing
- LIVE Live streaming
- Real-Time alerts for aggressive behavior
- Unlimited cloud storage of Incidents



30-DAY MONEY BACK		PREFERENTIAL PRICING	FREE SHIPPING
DESCRIPTION	PRICE	SUBSCRIPTION FEE	
beam2 mini 128gb + LTE	<del>\$159.95</del> \$140.76	<b>Min 2 vehicles</b> (Per Month Per Vehicle)  \$19.99 – 1 Year Commitment  \$17.99 – 2 Year Commitment  \$14.99 – 3 Year Commitment	
beam2 mini 256gb + LTE	<del>\$189.95</del> \$167.16		
beam2 128gb + LTE + Internal Facing Camera	<del>\$289.95</del> \$255.16		
beam2 256gb + LTE + Internal Facing Camera	<del>\$299.95</del> \$263.96		

Available with OBD pass-through kit or hardwiring kit upon request.  
Includes commercial-grade encrypted SD cards and secure SIM connectivity.

To learn more or see a demo contact:

